

TAILORED MORTGAGE ENGINEERING BY FIRM CAPITAL®

- Bridge Financing - 1st & 2nd Mortgages
- Land & Construction Financing
- Purpose Built Rental Construction
- Infill Construction
- Residential Mortgages
- Mezzanine Equity Capital
- Preferred Equity Capital
- Partnerships for Investment Properties
- Joint Venture Equity Capital

SELECTED TRANSACTIONS - BOUTIQUE MORTGAGE LENDERS®

INVENTORY LOAN
\$6,725,000



FIRST MORTGAGE

A 3-storey boutique waterfront condominium building

📍 HUNTSVILLE, ON

BRIDGE LOAN
\$6,000,000



FIRST MORTGAGE

39,480 sq. ft. industrial building

📍 TORONTO, ON

BRIDGE LOAN
\$42,600,000



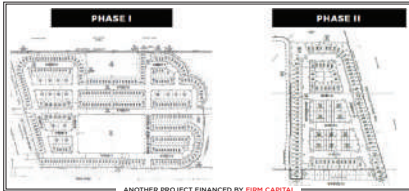
FIRST MORTGAGE

A Portfolio of 14 rental apartment buildings located in two residential complexes comprising 362 residential apartment units. These units are currently being converted into condominium units

📍 BROCKVILLE, ON



\$20,000,000



BRIDGE FIRST MORTGAGE

Phase I comprises 82 acre 391 unit low-rise draft plan approved site and Phase II features 48 acre zoned low-rise site with the potential for 378 housing units

📍 Southwestern Ontario

LAND SERVICING AND CONSTRUCTION LOAN
\$67,750,000

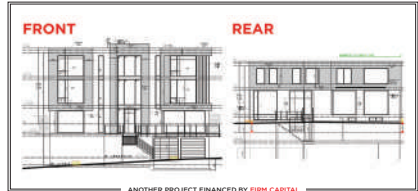


FIRST MORTGAGE

Servicing for 154 lots including house construction for 95 houses

📍 BLUE MOUNTAINS, ON

CONSTRUCTION LOAN
\$3,000,000



SECOND MORTGAGE

75' x 88' lot to be improved with a 6,316 sq. ft. custom home

📍 NORTH YORK, ON

RELATIONSHIP DRIVEN • EXECUTION FOCUSED

FOR MORE INFORMATION, PLEASE CONTACT:



REAL ESTATE CREDIT STRATEGIES

Firm Capital
 ☎ (416) 635-0221
 ✉ mortgages@firmcapital.com
 🌐 www.FirmCapital.com