

## TAILORED MORTGAGE ENGINEERING BY FIRM CAPITAL®

- Bridge Financing - 1st & 2nd Mortgages
- Land & Construction Financing
- Purpose Built Rental Construction
- Infill Construction
- Residential Mortgages
- Mezzanine Equity Capital
- Preferred Equity Capital
- Partnerships for Investment Properties
- Joint Venture Equity Capital

### SELECTED TRANSACTIONS - BOUTIQUE MORTGAGE LENDERS®

#### LAND & CONSTRUCTION LOAN

**\$5,400,000**



ANOTHER PROJECT FINANCED BY FIRM CAPITAL

#### FIRST MORTGAGE

6 freehold luxury townhouses

📍 ANCASTER, ON

#### DIP FINANCING

**\$80,000,000**



ANOTHER PROJECT FINANCED BY FIRM CAPITAL

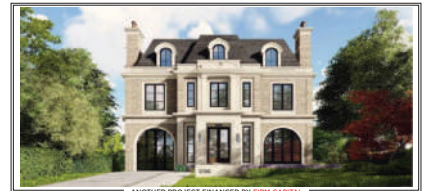
#### COURT APPROVED FINANCING

14-storey tower comprising 262 residential units with 166,763 sq. ft. net saleable floor area

📍 MISSISSAUGA, ON

#### CONSTRUCTION LOAN

**\$5,800,000**



ANOTHER PROJECT FINANCED BY FIRM CAPITAL

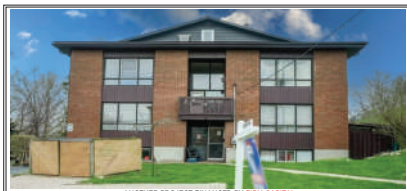
#### FIRST MORTGAGE

3-storey luxury custom home with 5,800 sq. ft. of above grade floor area

📍 TORONTO, ON

#### ACQUISITION LOAN

**\$1,075,000**



ANOTHER PROJECT FINANCED BY FIRM CAPITAL

#### FIRST MORTGAGE

6-unit residential apartment building

📍 GUELPH, ON

#### INVENTORY LOAN

**\$40,000,000**



ANOTHER PROJECT FINANCED BY FIRM CAPITAL

#### FIRST MORTGAGE

Two 11-storey residential condominium/apartment buildings comprising 262 units with a combined total of 225,768 net saleable/leasable sq. ft.

📍 LONDON, ON

#### REFINANCE

**\$2,450,000**



ANOTHER PROJECT FINANCED BY FIRM CAPITAL

#### FIRST MORTGAGE

Condominium portfolio comprising 5 residential units

📍 TORONTO, ON

### RELATIONSHIP DRIVEN • EXECUTION FOCUSED

FOR MORE INFORMATION, PLEASE CONTACT:



REAL ESTATE CREDIT STRATEGIES

**Firm Capital**

☎ (416) 635-0221

✉ mortgages@firmcapital.com

🌐 www.FirmCapital.com